

How to Separate and Dispose of Household Garbage



App Version

- Please take out your garbage to the front of your house by 8:00 a.m.
(If your house faces an alley where a collection vehicle cannot pass through, please consult with the Environmental Conservation Section.)
- Unseparated garbage and commercial garbage cannot be collected.
- Collection service is also available on national holidays. (Not available on Sundays, January 1 ~ 3)
- Garbage will not be collected during stormy weather. Please take out the garbage on the next collection day.
(If route bus services are disrupted, collection services will also be suspended.)

Contact information for inquiries on garbage, etc.

Collection of garbage (Reception of bulk trash/plants and trees, and consultation on garbage collection site/illegal dumping)	Environmental Conservation Section	☎876-1234 (Main)
	City roads	Environmental Conservation Section ☎876-1234 (Main)
Disposal of dog and cat carcasses on roads	Prefectural roads	Central Civil Engineering Office ☎894-6512
	National roads	Southern National Road Office Kadena National Road Branch ☎943-6203
Fallen roadside trees, trash in side ditches	City roads	Road Section ☎876-1234 (Main)

Combustible Garbage (Bags designated by the city)

Please make sure to tie each bag at the top.



*Garbage should be taken out after being put in a designated garbage bag.

Kitchen Garbage

- Vegetable waste, used tea leaves, leftovers, shells, etc.
- Cooking oil



*Please make sure to drain water.

*Cooking oil should be disposed of after being soaked up into a newspaper, etc.

Plastic

- Vinyl bags, shopping bags
- Plastic goods
- Styrofoam
- Tapes, CDs, DVDs
- Toys

(Metallic toys and small electric appliances are non-combustible garbage.)



Wastepaper

- Tissues, paper diapers (Filth should be flushed in the toilet.)
- Unrecyclable paper (Photos, carbon paper, thermal paper, water-proof paper, etc.)



Other

- Fabrics, clothing
- Rubber, leather goods



Non-Combustible Garbage (Bags designated by the city)

Please make sure to tie each bag at the top.



*Garbage should be taken out after being put in a designated garbage bag.

Metals

- Pots, frying pans, kettles, iron scraps
- Umbrellas, wires, hangers
- Paint cans, etc.

Glass/Bottles

- Glass cups, sheet glass
- Mirrors
- LED lamps, incandescent lamps
- Cosmetic bottles, oil bottles, etc.



Ceramics

- Rice bowls, plates, vases, earthen pots, etc.
- Flowerpots (Plastic goods are combustible garbage.)

Other

- DVD players, fans, vacuum cleaners, etc.

*Small electric appliances, except for bulk garbage and recyclable home appliances, which can be contained in a bag (max. 10kg)

How to Dispose of Non-Combustible Garbage

*Knives and broken and dangerous articles should be disposed of after being wrapped in several sheets of transparent vinyl or newspaper marked with "Danger" and put into a designated bag for non-combustible garbage.

Harmful/Dangerous Garbage (Max. 45-liter transparent bag) To be collected on the same day as non-combustible garbage

Please separate garbage by type and make sure to tie each bag at the top.

- Fluorescent lamps
- Products using mercury (clinical mercury thermometers, etc.)
- Disposable lighters, spray-cans (The content such as fuel should be completely used.)
- Batteries (excluding small rechargeable batteries)



*A small bag is OK.

Recyclable Garbage (The method of disposal may change depending on the type of garbage.)

Plants/Trees

How to Dispose of

- ★ Plants and trees should be cut into about 50cm length pieces and bound with string so that one bundle is about 10kg.
- ★ Small plants, leaves, weeds, etc., should be put in a 45-liter (the same size as a large size of the designated bag) transparent bag (other than the designated bag) for collection.

Volume of Garbage

- ★ Up to 6 bags (or bundles) at a time (Total 6 items for both). For more than that, please take out on the next collection day.



*If plants and trees contain moisture, please make several small holes at the bottom of the bag before taking out.

The collection of big tree branches and trunks requires contact by telephone (by 4 p.m. on the previous day).

- ★ Tree branches and trunks that exceed 5cm in diameter should be cut into about 50cm length pieces and bound with string so that one bundle is about 10kg.

Contact: Environmental Conservation Section

Not Allowed

- ★ Timber, plywood, square logs, etc. (Some may be painted or stained with wood preservatives and cannot be recycled into compost.)
- ★ Large pieces of wood should be separated as "Bulk Garbage".

Paper

- Newspapers/flyers
- Books/magazines (incl. candy boxes, tissue boxes, etc.)
- Cardboard
- Drink boxes (Drink boxes should be rinsed with water and spread out.)



How to Dispose of

- ★ Please bind together with string for each type. Paper string is preferable.
- ★ Do not put in a bag.
- ★ On a rainy day, please postpone until the following week to the extent possible. (Wet paper cannot be recycled.)
- ★ Milk cartons should be rinsed out with water and spread open.
- ★ Dirty milk cartons cannot be recycled.

Cans

- Cans for juice, Soda, beer, candy, etc.



Bottles

- Juice, Soda
- Awamori, beer, wine, whisky

- Health drink, seasoning, medicine, etc.

*Broken bottles should be separated as non-combustible garbage.

Plastic bottles

- Juice, Soda
- Sake, sweet cooking rice wine, soy sauce, etc.



How to Dispose of

- ★ Remove caps. (Plastic caps should be separated as combustible garbage, and metallic caps as non-combustible garbage.)
- ★ Rinse. ★ Don't crush.
- ★ In the case of plastic bottles, the labels should be peeled off.
- ★ Put cans, bottles and plastic bottles into a basket/bucket all together. (They will not be collected if put into a bag.)

Bulk Garbage (Disposal coupons)

Household Furniture (About 50kg that can be lifted by two persons)

- Drawers, desks, chairs
- Tables, sofas, etc.

Please contact by telephone after measuring the length, width, and height.



Electric Appliances

- Microwaves, stove burners, etc.



Bedclothes

- Futons, carpets
- Mattresses, beds, etc.

*Futons may be taken out in a combustible garbage bag. Place a futon in a medium-sized garbage bag that allows for tying up at the top.



Other

- Timber, plywood, square logs, etc.

*They should be cut into not more than 1.5m length pieces and bound with string. (About 10kg)

- Laundry poles

(As they cannot be loaded into a vehicle, they should be cut into not more than 1.5m length pieces.)

- Soil should be put into a bag for sandbags (max. 10kg) (Up to 2 bags at a time)



Garbage that cannot be collected by the city

Domestic waste that is difficult to dispose of properly

- Please ask a professional disposal company for collection.



Pianos



LP gas cylinders



Fire extinguishers



Tires



Motorbikes, cars (incl. parts)



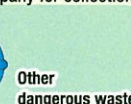
Batteries



Small rechargeable batteries



Water tanks



Other dangerous waste

Products subject to recyclable home appliances (TV sets, refrigerators/freezers, washing machines, dryers, air conditioners)

★ Please ask the distributor where you purchased your product or professional collection company for collection.

Home Personal Computers

- ★ For disposal of a home personal computer, please inquire with the respective manufacturer.



PC3R Promotion Association

☎03-5282-7685

List of Garbage Collection Areas by Address

District	Address	Bulk Garbage	Non-Combustible Garbage Harmful/Dangerous Garbage	Combustible Garbage	Recyclable Garbage
Nakama	Aza-Nakama/3-chome	Thu.	1st/3rd Thu.	Wed./Sat.	Tue.
	1-chome/2-chome	Fri.	2nd/4th Fri.		Mon.
Ahacha	1-chome/3-chome	Thu.	2nd/4th Thu.	Wed./Sat.	Tue.
	2-chome	Fri.	2nd/4th Fri.		Mon.
Iso	1-chome/2-chome/4-chome	Wed.	1st/3rd Wed.	Tue./Fri.	Sat.
	3-chome		2nd/4th Wed.		
	5-chome	Mon.	2nd/4th Mon.	Thu.	
Makiminato	Aza-Makiminato	Mon.	2nd/4th Mon.	Tue./Fri.	Thu.
	2-chome				
	5-chome				
	1-chome		1st/3rd Mon.		
	3-chome/4-chome				
Minatogawa	Aza-Minatogawa	Mon.	2nd/4th Mon.	Tue./Fri.	Thu.
	1-chome/2-chome	Wed.	2nd/4th Wed.		Sat.
Gusukuma	Aza-Gusukuma (West side of Route 58)	Mon.	2nd/4th Mon.	Tue./Fri.	Thu.
	1-chome	Wed.	2nd/4th Wed.		Sat.
	2-chome		1st/3rd Wed.		
	3-chome/4-chome				
Yafuso	4-chome	Wed.	2nd/4th Wed.	Tue./Fri.	Sat.
	1-chome/2-chome	Tue.	1st/3rd Tue.	Mon./Thu.	Fri.
	3-chome				
Miyagi	1-chome	Tue.	1st/3rd Tue.	Mon./Thu.	Fri.
	2~4-chome (with exceptions)		2nd/4th Tue.		
	(Exception) 2-chome 40~41 Miyagi (Exception) 3-chome 14~18 Miyagi (Exception) 4-chome 19~23 Miyagi	Sat.	1st/3rd Sat.		Wed.
	5-chome				
	6-chome				Tue.
	Nakanishi	1~3-chome Nakanishi	Sat.		1st/3rd Sat.
Jicchaku	1~4-chome Jicchaku	Sat.	2nd/4th Sat.	Mon./Thu.	Wed.

Urasoe City Hall

Address: 1-1-1 Ahacha, Urasoe City,
Okinawa Prefecture, 901-2501

tel : 098-876-1234

(Environmental Conservation Section)

District	Address	Bulk Garbage	Non-Combustible Garbage Harmful/Dangerous Garbage	Combustible Garbage	Recyclable Garbage
Uchima	1-chome	Tue.	2nd/4th Tue.	Mon./Thu.	Fri.
	2-chome/3-chome	Sat.	2nd/4th Sat.		Wed.
	4-chome/5-chome		1st/3rd Sat.		
Takushi	Aza-Takushi/1-chome 2-chome 1~17	Thu.	2nd/4th Thu.	Wed./Sat.	Tue.
	2-chome 18~ ★Area around Sports Club "XYSTUS"	Sat.	2nd/4th Sat.	Mon./Thu.	Wed.
Kozuka	Aza-Kozuka (East side of Prefectural Road 153) ★Kozuka Post Office side/ Prefectural Kozuka Housing Complex	Thu.	1st/3rd Thu.	Wed./Sat.	Tue.
	Aza-Kozuka/1-chome Kozuka (West side of Prefectural Road 153) ★Urasoe Technical High School/Yuimaru Center side)		2nd/4th Thu.		
Maeda	2-chome/3-chome (North of Prefectural Road 38) ★Urasoe Fire Station/Maeda Municipal Housing side Area around Chuo Shiunkaku	Fri.	1st/3rd Fri.	Wed./Sat.	Mon.
	Aza-Maeda/1-chome/4-chome (South of Prefectural Road 38) ★Area around Maeda Elementary School	Thu.	1st/3rd Thu.		Tue.
Nishibaru	1~6-chome Nishibaru	Fri.	1st/3rd Fri.	Wed./Sat.	Mon.
Toyama	1~3-chome Toyama	Fri.	2nd/4th Fri.	Wed./Sat.	Mon.
Ohira	Aza-Ohira/3-chome (East side of the bypass)	Thu.	2nd/4th Thu.	Wed./Sat.	Tue.
	1-chome	Tue.	1st/3rd Tue.	Mon./Thu.	Fri.
	2-chome		2nd/4th Tue.		

How to Check Calendar (Example)

日	月	火	水	木	金	土
					1	2
3	4	5	6	7	8	9
10	11	12	13	14	15	16
17	18	19	20	21	22	23
24	25	26	27	28	29	30
31						

1st Saturday

1st Thursday

3rd Saturday

3rd Thursday

*The 1st/3rd Thursdays mean the first and third Thursdays of a month.

*Collection service is also available on national holidays.

(Not available on Sundays, January 1 and 2.)